

Overview

For LVL structures to achieve their greatest potential the individual billets of LVL need to be fabricated into larger finished sections.

This involves taking billets of LVL up to 1.2m wide and 105mm thick and forming them into specifically designed beams & columns.

Fabrication of LVL structures demands the same careful quality control as Glulam manufacture. TimberLab's wide experience in gluing large structural timber members meant fabricating large LVL sections was a natural progression.

Achieving adequate gluing pressure and dimensional accuracy are prerequisite to achieving the designer's expectations.

Benefits

- » **Accuracy** - With the use of our 5 axis CNC bridge, TimberLab's accuracy is unparalleled, removing any uncertainty about rework onsite.
- » **Pre fitting** - critical connections in the factory makes on site assembling so much simpler and quicker.
- » **Factory Assembled** - Full size in-factory assembly ensures a correct fit to prepared site.
- » **Long lengths** - avoid complicated splice joints
- » **Utilities & Conduits** - Can be cut/drilled in factory for easy running of utilities onsite.
- » **Economical** - Fabricated LVL offers an extremely economical structural material.
- » **Environmental** - As TimberLab's LVL comes from only plantation timber, it is the good sustainable choice.



TimberLab's LVL Projects - a Snapshot

Using Futurebuild LVL from CHH, TimberLab has achieved notable successes in fabricated LVL

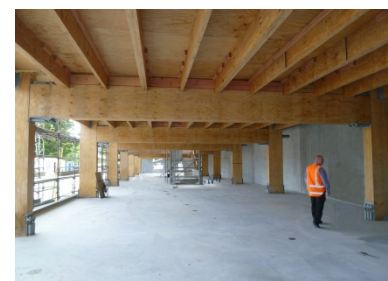
Christchurch Transitional Cathedral Fabricated LVL rafters; the structural component of the cardboard tube. Additional joinery of the rose window.



Diocesan School (Auckland). Post Tensioned box beams 27m span over indoor swimming pool.



Merritt (Christchurch) Commercial building. First 3 storey post-tensioned structure with damage-limiting energy dissipaters.



Trimble (Christchurch) 2 storey Post-Tensioned office block. LVL fabricated columns, floor and roof beams. 2 Storey LVL rocking shear walls.



Some of our Other LVL Projects

Transpower (Christchurch) / Brands Laboratory (Wellington) / Ihenga - Waiariki Training Centre (Rotorua) / Rangiora College (Rangiora) / St John Vianney Church (Auckland) / Shirley Primary (Christchurch) / Ecofast House (Matakana)