

## Facts on TimberLab RESIDENTIAL SOLUTIONS

### Overview

The Timberlab Residential Solution offers a flexible outcome to floor, roof, lintel and external application designs. With our products commonly available in depths of 190mm, 200mm, 240mm and 290mm, a solution can be found utilising both fully engineered timber products, (Glulam, LVL etc) and solid SG8 timber.



TimberLab is able to offer Engineered Timber for any application, whether it is a pitched I-Bond roof rafter or an H5 Glulam Post for a fence.

TimberLab's input is not limited to the supply of products. Our staff are available to advise on ways to achieve the optimum design for both layout and economic use of engineered wood products. Optimising the design can not only save cost on the construction itself, (i.e. reducing installation time) but also on trades such as plumbers, electricians etc. by accommodating the requirements of these trades within the design. There is also potential to minimise the number of internal loadbearing walls / support, saving costs in earthworks foundations and piling.

### Benefits

TimberLab's engineered residential systems offer a cost effective solution giving the builder confidence in the quality of construction and predictable performance.

» Integrates with both Engineered and solid timber products.

» A tailored solution to your individual project

» All products where required labelled to a corresponding layout drawing for ease of installation

» Supplied as a complete package – no delays waiting for various suppliers delivering product.

» All lengths cut to 100mm over length for site trimming, minimising waste and associated costs

» Product can be cut to exact length if required.

» Timber based products means they can be worked with tools readily available on site.

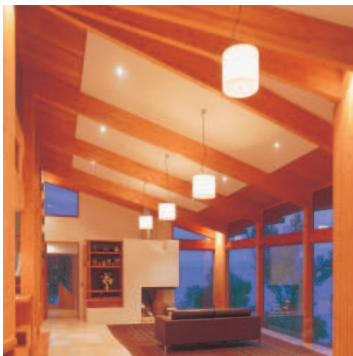
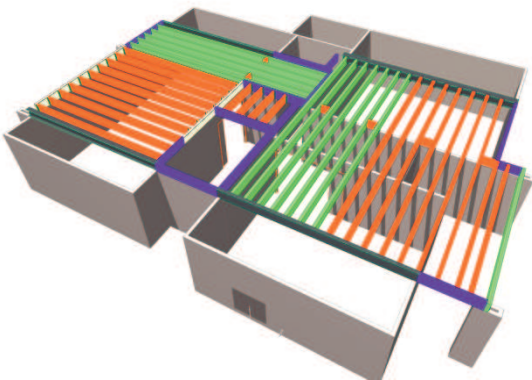
» Predictable performance – Engineered products minimise the risk of shrinkage and twisting of components whether within a floor or externally in a pergola. This minimises the associated issues that can be normally attributed to product movement.



## Service

TimberLab is able to offer full support for Residential applications of engineered timber. To enable us to provide a total Residential Solution, we offer the following services;

- » Concept plan analysis
- » Full engineering & design service
- » Full product take-off included in quotations
- » Layout Drawings
- » 3D modelling
- » Product cut to exact length if required
- » Products labelled as per layout drawing
- » Product Supply
- » Relevant Producer Statements
- » Site deliveries
- » Post-installation inspections



## PRODUCT ATTRIBUTES

	GLULAM	I-BOND	LVL
<b>APPLICATION</b>			
<b>ROOF</b>			
Rafter	✓	✓	✓
Purlins	✓	✓	✓
Truss	✓		✓
Ridge Beam	✓		✓
Hip Beam	✓		✓
Roof Beam	✓		✓
Lintel	✓		✓
<b>FLOOR</b>			
Floor Beam	✓	✓	✓
Floor Joist	✓	✓	✓
Trimmers	✓	✓	✓
<b>WALL</b>			
Lintel	✓	✓	✓
Post	✓		
<b>EXTERNAL</b>			
Deck Beam	✓		
Deck Joist	✓	✓	
Deck Post	✓		
Fence Post	✓		
Veranda Rafters	✓	✓	
Pergolas	✓		
<b>TREATMENTS</b>			
H1	✓	✓	✓
H3 LOSP	✓	✓	✓
H3.2 CCA	✓	✓	
H4	✓		
H5	✓		
<b>AESTHETICS</b>			
Low	✓	✓	✓
Medium	✓	✓	✓
High	✓		
Very High	✓		



INCORPORATING

**TIMBERBOND**



TimberLab Solutions Ltd

9 Bostock Place, East Tamaki, Auckland 2013, New Zealand  
PO Box 204-116, Highbrook, Auckland 2161, New Zealand

T +64 9 253 9349 F +64 9 253 9370

[www.timberlab.co.nz](http://www.timberlab.co.nz)