

## Facts on TimberLab EXPERIENCE

### Overview

McIntosh Timber Laminates Ltd and TimberBond Industries NZ Ltd have been business names at the forefront of engineered timber services and products for many years, both working to promote the use of engineered timber across commercial and residential building projects locally and overseas. On 1st November 2012 these two impressive companies joined forces with a combined experience of 76 years in an initiative that is seeing new innovations in the use of engineered timber.

**TimberLab is NZ's largest and most experienced** manufacturer of Glulam building systems, complete midfloor packages, Glulam projects with arches, portals, bridges and long span beams, multi-storey fabricated LVL structures. This means we are able to provide assistance and advice that might save you time and cost.



Circa  
1950's  
  
1960's  
  
1970's  
  
1980's  
  
1990's  
  
2000's  
  
Current

## TimberLab's Distinction

**Commitment to Quality** - Quality of production and service has always been a priority of TimberLab. Having been involved in the development of manufacturing standards since the 1970s, TimberLab holds Registration No PMA09 and is certified under PINENZ third party inspection complying with the strict requirements of ASNZS1328 & AS 5068 for Glulam & Finger Jointing.

**Superior grading capabilities** – TimberLab uses sonic testing of all timber to ensure strength and stiffness meets the requirements demanded in an engineered timber product to avoid deflection and underperformance.

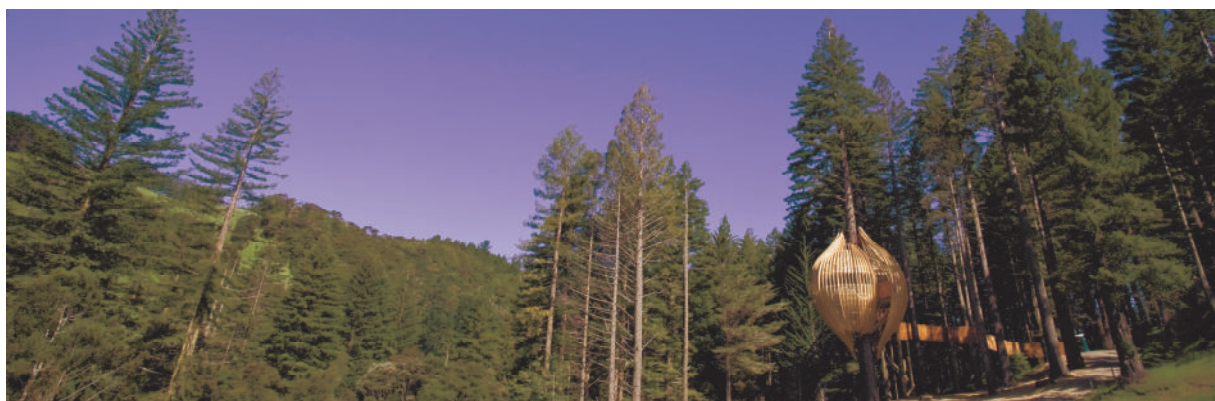
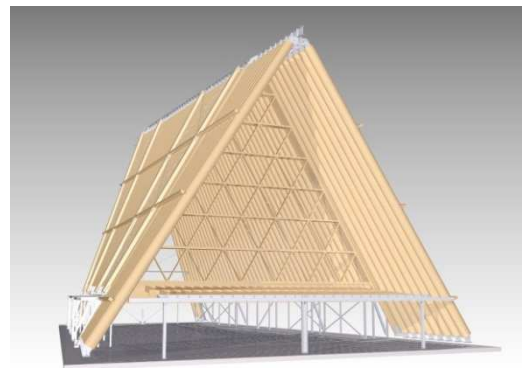
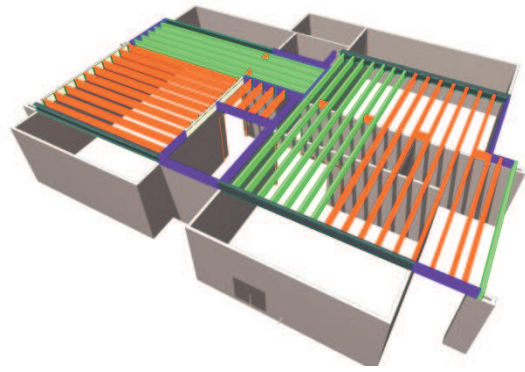
**CAD Drawing and Engineering** – TimberLab has in-house drawing capabilities for specialized engineered timber solutions and can provide engineering assistance if required.

**Versatility** – With purpose built facility we can produce timber members of Any length – Any shape – Any size.

**Certified Renewable Resource.** TimberLab is Licensed to provide FSC Certified, Chain of Custody product ensuring strict compliance with environmental standards.

**Innovative Solutions.** TimberLab is equipped with specialised plant and equipment enabling the processing of material up to 2m wide and 300mm thick. With the introduction of NZ's first 5 axis CNC Bridge processing machine at the end of 2013 we will be able to accurately profile detailed timber elements with multiple facets up to 35m long and 4m wide.

With the combination of resources and effective response to the growth of engineered timber in construction; we welcome your business



INCORPORATING

**TIMBERBOND**



TimberLab Solutions Ltd

9 Bostock Place, East Tamaki, Auckland 2013, New Zealand  
PO Box 204-116, Highbrook, Auckland 2161, New Zealand

T +64 9 253 9349 F +64 9 253 9370

[www.timberlab.co.nz](http://www.timberlab.co.nz)